

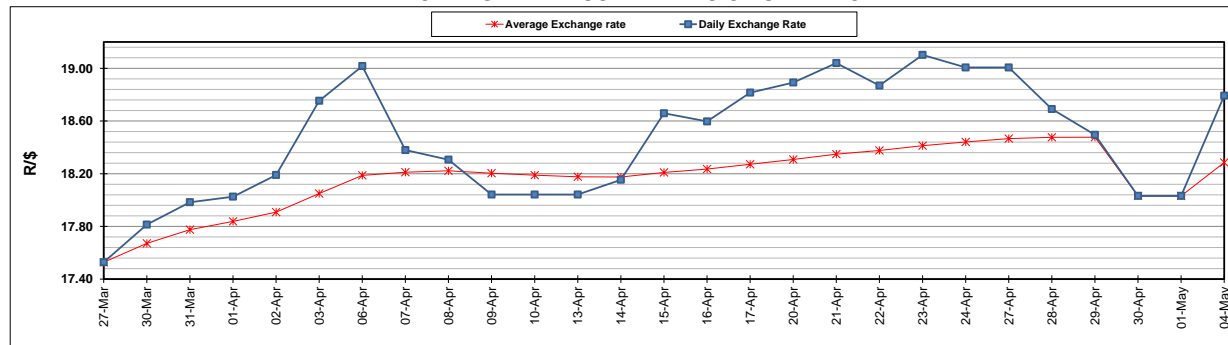
	PETROL 95 ULP	PETROL 93 ULP & LRP	DIESEL 0.05%	DIESEL 0.005%	ILL. PAR.
GAUTENG PUMP PRICE (SA c/l) AS FROM 06/05/2020	1,222.000	1,202.000	-	-	-
WHOLESALE PRICE (SA c/l) AS FROM 06/05/2020	-	-	1,108.560	1,117.960	449.828
SINGLE NATIONAL MAXIMUM RETAIL PRICE	-	-	-	-	543.000
BASIC FUEL PRICE - 04/05/2020 (SA c/l)	339.477	326.911	318.768	328.302	183.146
PRESS RELEASE CONTRIBUTION TO BFP 30/04/2020 - 04/05/2020 (SA c/l)	448.770	438.770	518.630	523.030	468.128
UNIT OVER/(UNDER) RECOVERY - 04/05/2020 (SA c/l)	109.293	111.859	199.862	194.728	284.982
AVERAGE BASIC FUEL PRICE 30/04/2020 - 04/05/2020	327.213	314.981	311.761	319.072	180.896
AVERAGE UNIT OVER/(UNDER) RECOVERY 30/04/2020 - 04/05/2020	121.557	123.789	206.869	203.958	287.232

ANALYSIS MOVEMENT OF AVERAGE OVER/(UNDER) RECOVERY

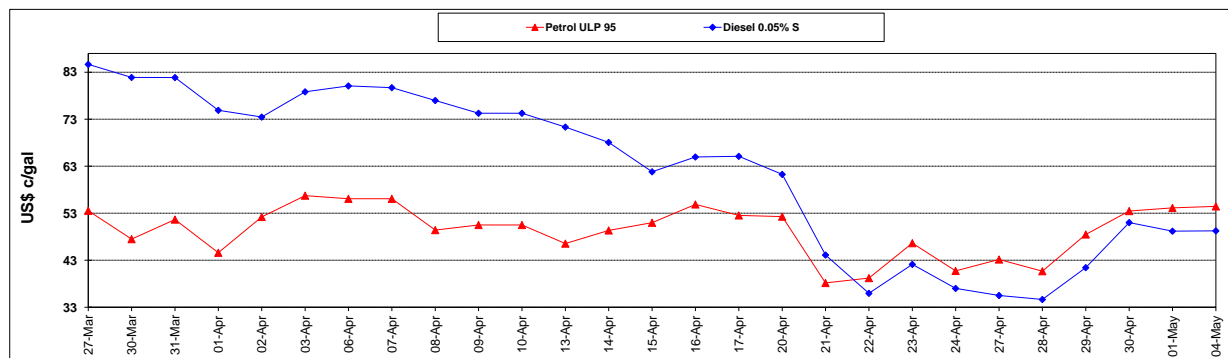
	PETROL 95	PETROL 93	DIESEL 0.05%	DIESEL 0.005%	ILL. PAR.
- MOVEMENT IN INTERNATIONAL PRODUCT PRICES	118.119	120.480	203.594	200.606	285.332
- MOVEMENT IN EXCHANGE RATE	3.438	3.309	3.275	3.352	1.900
AVERAGE UNIT OVER/(UNDER) RECOVERY 30/04/2020 - 04/05/2020	121.557	123.789	206.869	203.958	287.232

R/\$ EXCHANGE RATE - (R/\$18.7923 - 04/05/2020)

EXCHANGE RATE USED IN BASIC FUEL PRICE



INTERNATIONAL PRODUCT PRICES OF BASKET USED IN BASIC FUEL PRICE



BASIC FUEL PRICE IN SA CENTS PER LITRE

